

# 9Fittings for gas

Multifunction assembly (screwed) consisting of:

- Double solenoid valves to EN 161 (Class A)
- Servo assisted pressure regulator to DIN EN 88-1, slow opening, adjustable start gas pressure
- Gas filter

## –weishaupt–

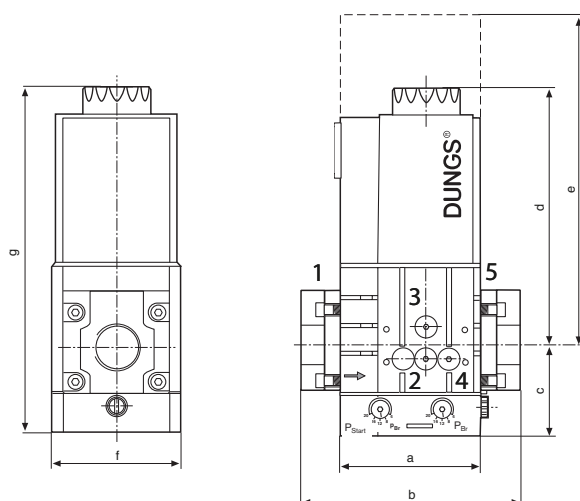
### Function

#### W-MF 5xx SLE

Two single stage solenoid valves, normally closed, with slow opening characteristic, fast closing, with servo assisted pressure regulator and gas filter.

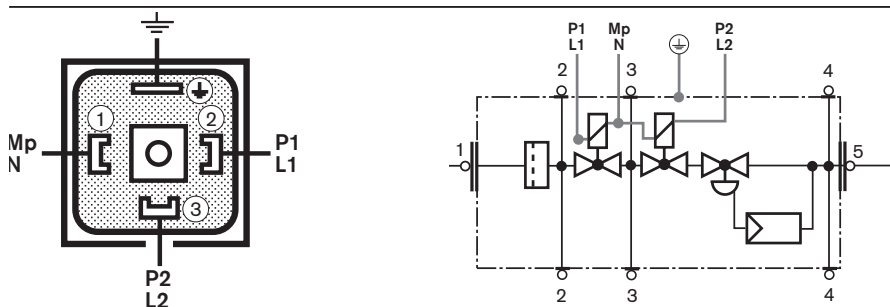
Setting range outlet pressure:  
4-20 mbar

### Installation dimensions W-MF 5xx SLE

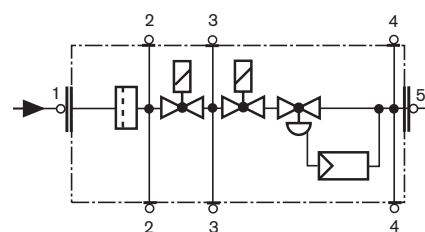


e = Platzbedarf für Magnetwechsel

### Elektroanschluß



### Pressure test



### Legend

- 1,2 Pressure into V1
- 3 Pressure between V1 and V2
- 4,5 Pressure after V2

### Pressure test:

- Pos. 2, 3, 4 Rp 1/8
- Pos. 1, 5 Rp 1/4

### Note:

It is recommended that the filter element G1/8 on the breather nozzles is changed in line with the annual service of standard installations.  
On installations with a higher degree of soiling and dust, the intervals should be shortened accordingly.  
Order No.: 605 302

### Dimensions

Type	Connection	a	b	c	d	e	f	g	Weight kg	Solenoid No.	Rating (VA) t=3s	Rating (VA) oper.	Product ID No.	Order No. ①
W-MF 507 SLE	Rp 3/4-1	95	143	61	173	210	87	234	3.8	032/P	120	16	CE-0085 BM 345	605 326
W-MF 512 SLE	Rp 1-2	126	176	80	186	223	114	265	6.5	042/P	160	20	CE-0085 BM 345	605 327

Dimensions given are approx. values. We reserve the right to make changes in line with future developments.

① Connection flanges are accessories and not included in the order number.

# Fittings for gas

Double gas valves (DMV 5xx/11, /12 and W-MF 5xx) to EN 161 (Class A) screwed

– weishaupt –

## Accessories

Flange	for DMV... and W-MF	Order No.	Hydraulic damper	for DMV ...	Order No.
Rp $\frac{3}{4}$	507/11	605 227	H 12/5	507/11	605 237
Rp 1	507/11	605 233	H 12/5	512/11	605 237
Rp 1	512-520/11	605 228	H 12/5	520/11	605 237
Rp 1 $\frac{1}{2}$	512-520/11	605 230	<b>Ignition gas flange</b>		
Rp 2	512-520/11	605 231	for DMV-D 507-520	Rp 1/2	605 232
Rp 1 $\frac{1}{2}$	525/12	625 030	W-MF 5xx		
Rp 2	525/12	625 031	for DMV 525/12	Rp 3/4	625 032

## Technical data

Size	DMV 507	DMV 512.520	DMV 525/12	Installation position	Solenoid vertical or horizontal
Flange with pipe thread to ISO 7-1	Rp <sup>3</sup> / <sub>4</sub> , 1 and their combinations	Rp 1, 1 <sup>1</sup> / <sub>2</sub> , 2	Rp 1 <sup>1</sup> / <sub>2</sub> , 2	Strainer	DMV: Integral sieve W-MF 5xx: Integral sieve + filter
Media	Gases to DVGW work sheet G 260/I, Biogas with up to 0.1% v H <sub>2</sub> S dry			Voltage/frequency	~ (AC) 50-60 Hz 220V - 240V -15% +10%, other voltages on request, Available voltages: ~(AC) 110V-120V,
Max. operating pressure	500 mbar			Rating/consumption	at ~ (AC) 240V; + 20°C; see type overview
Solenoid valve 1 (V1)	automatic shut off valve to EN 161: Class A			Type of protection/switch on duration	IP 54 / 100% ED
Solenoid valve 2 (V2)	automatic shut off valve to EN 161: Class A			Electrical connection	Plug connection EN 175301-803
Closing time	< 1s			Interference protection	Interference degree N
Opening time	DMV, DMV-D: < 1s W-MF, W-MF SE < 1s W-MF SLE approx. 20s depending on pe DMV-DLE: approx. 20s at room temperature 20°C and without quick action stroke			Limit contact	DMV: Type K01/1 (DIN tested), can be fitted to V1 and V2 W-FM 5xx: not possible
Quick action stroke (for LE...) up to DMV 520/11	Manually adjustable up to approx. 70% of total stroke				
Main flow restrictor	On DMV/11 manually adjustable on V1				
Materials of gas carrying parts valve seat:	Housing: Gaskets on valve seat	Aluminium, steel NBR basis suitable for gases to G260/1 brass free (DMV: Viton as special equipment)			

Ambient temperature - 15°C to + 60°C

Max Weishaupt GmbH, D-88475 Schwendi  
Tel.: + 49 7353 8 30, Fax: +49 7353 8 33 58  
Technical folder 674 GB, December 2008  
All rights reserved.  
We reserve the right to make changes.